

SEZ Restoration Monitoring

Information needs and approaches



Lahontan Water Board

February 9, 2010



Lahontan Water Board

1. Regulatory & Monitoring Needs
2. Examples - TMDLs
3. Goals & Suggestions



Regulatory & Monitoring

1. Regulatory Needs

- Protect WQ and beneficial uses
- Short-term v. long-term
- 303(d) list - TMDL targets?

2. Monitoring approaches

- Instream WQ
- BMP effectiveness
- Veg, sinuosity, stability, IBI, etc.



Examples

1. Blackwood Creek Sediment TMDL – by 2028

- Vegetative cover increasing trend
- Channel sinuosity > 1.6
- 80% in-reach bank stability

2. Heavenly Valley Ck Sediment TMDL – by 2021

- Instream sed load < 58 tons/yr
- Improving macroinvertebrate community
- Improving trends in channel morphology



Lake Tahoe Basin 303(d)

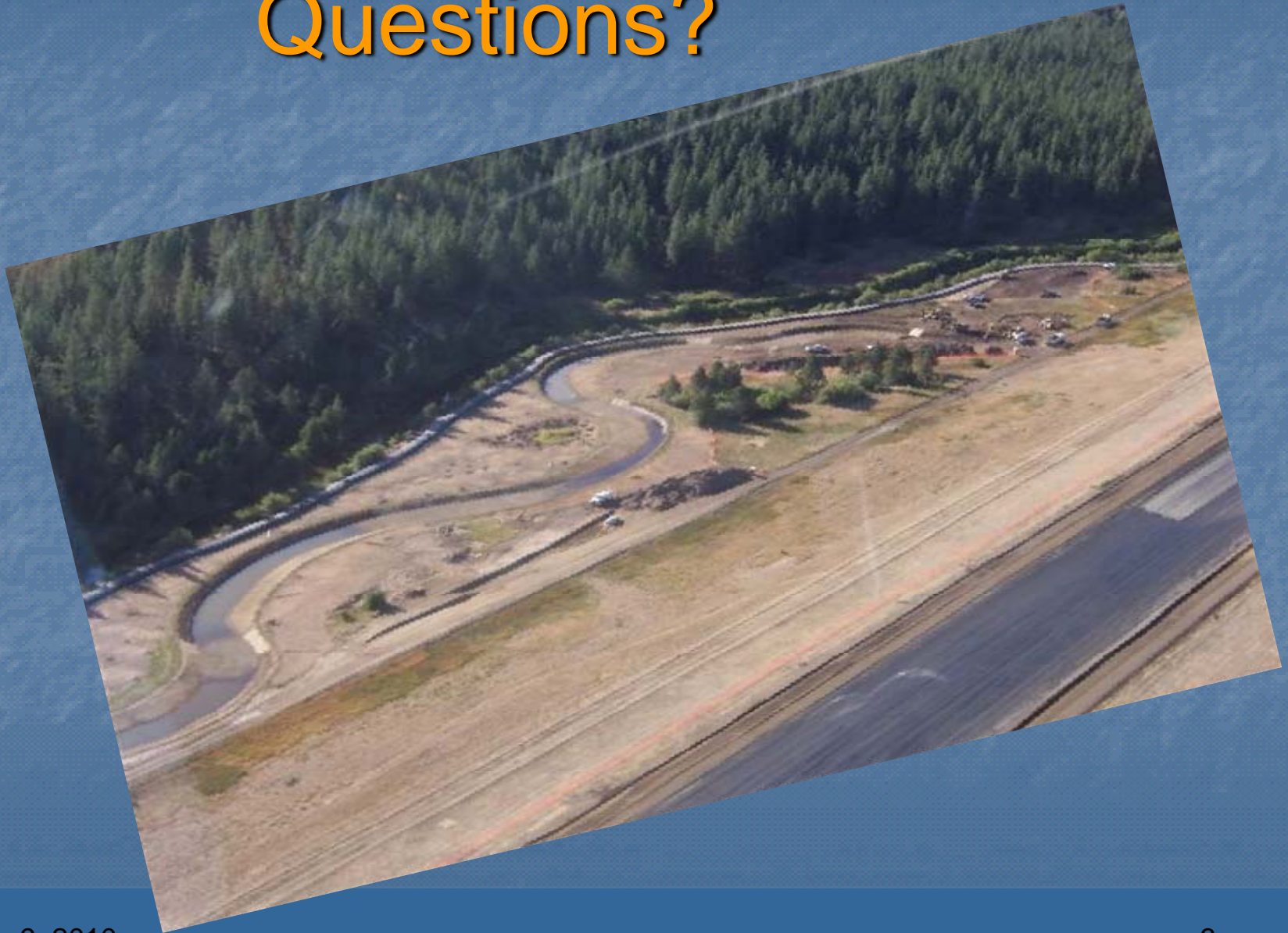
1. WQ Information = goal

- Upper Truckee R = phosphorus
- Trout Creek = N & P
- Ward Ck = N, P, sediment
- Fine sediment particles?

2. Suggested Monitoring

- Before, during, after: N/P/sediment?
- BMPs, turbidity plume
- Vegetation, sinuosity, bank stability, sed capture, IBI, etc.

Questions?



February 9, 2010